

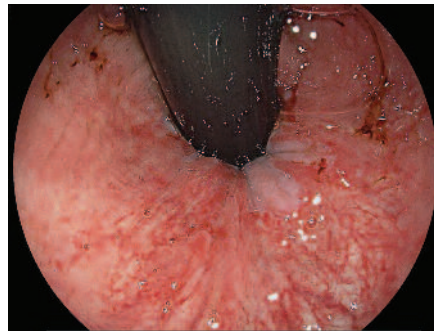
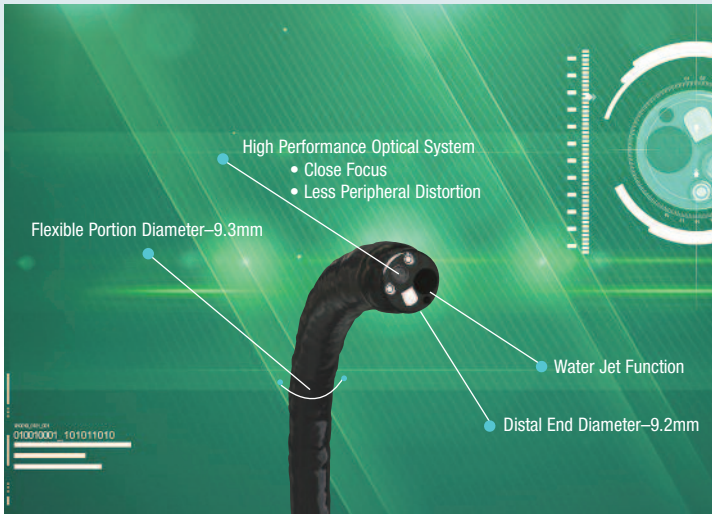
**HIGH-RESOLUTION ENDOSCOPES
EQUIPPED WITH LATEST MEGAPIXEL
CMOS IMAGE SENSOR TECHNOLOGY**



FUJIFILM DIGITAL VIDEO **600 SERIES CMOS** ENDOSCOPES

ENHANCED OBSERVATION AND DIAGNOSIS WITH WITH THE LATEST MEGAPIXEL CMOS

EG-600WR VIDEO GASTROSCOPE



WHITE LIGHT IMAGE

HIGH-DEFINITION IMAGES WITH LATEST **CMOS** TECHNOLOGY

EG-600WR and EG-600WL are equipped with the latest megapixel **CMOS image sensor technology** which provides super high resolution imaging with 60p video and over one megapixel still images. With **CMOS technology**, the image sensor can change the analog signal at the end of the scope to a digital signal which is less affected by outside noise, resulting in clear imaging.

CLOSE FOCUS OBSERVATION WITH **CMOS** TECHNOLOGY

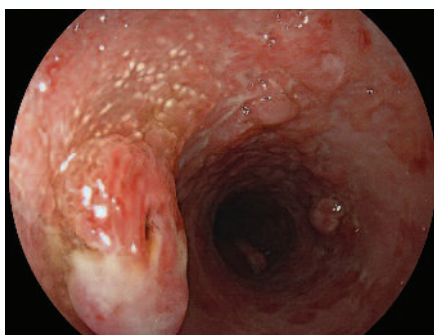
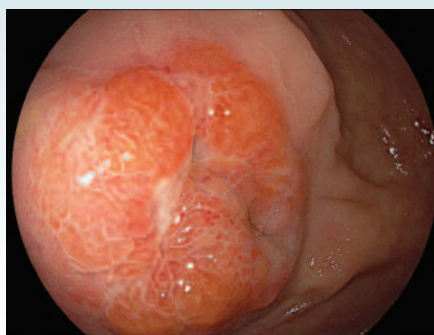
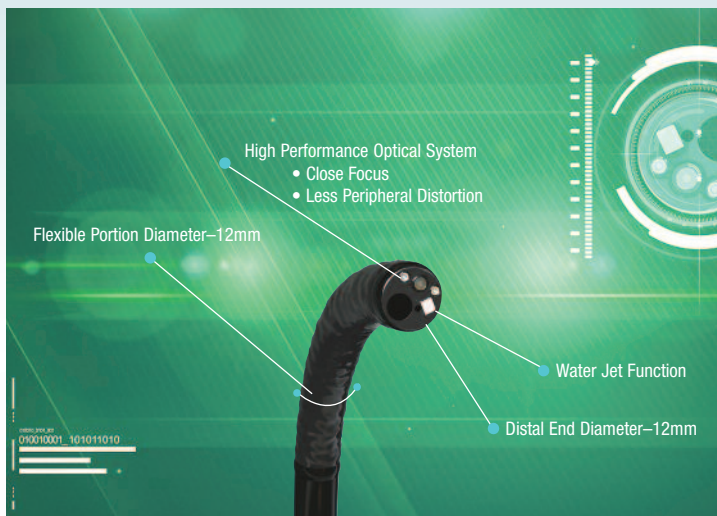
CMOS technology provides high resolution images as close as 2mm with less peripheral distortion. This enables closer investigation of surface and micro vascular patterns and may help physicians characterize premalignant lesions.



Focus at the edge of the image of a lumen has been improved by minimizing distortion.

NEW HIGH-RESOLUTION ENDOSCOPES EQUIPPED WITH IMAGE SENSOR TECHNOLOGY

EC-600WL VIDEO COLONOSCOPE



WHITE LIGHT IMAGE

MODIFIED INSERTION TUBE ENABLES MORE FLEXIBLE INSERTION INTO THE COLON

The flexibility of the insertion portion of the colonoscope gradually increases towards the distal end (due to modified insertion tube) which helps to improve insertion operability.

Improved torque and insertion power transmission enable smoother insertion into large intestine. The smaller diameter of 12mm may aid in reducing patient discomfort during procedure.

WATER JET FUNCTION

Water Jet function is available in both gastroscope and colonoscope for improved observation and therapeutic procedure.

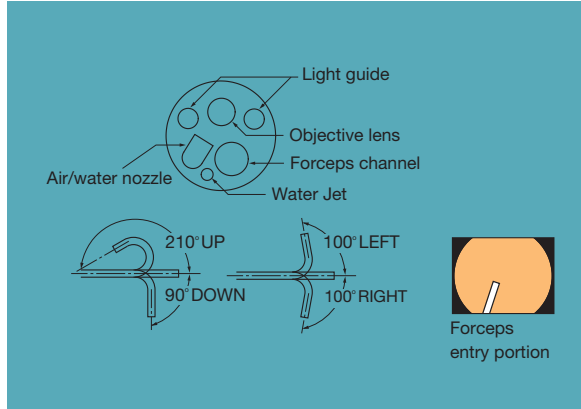


New Water Jet connector

EG-600WR
VIDEO GASTROSCOPE



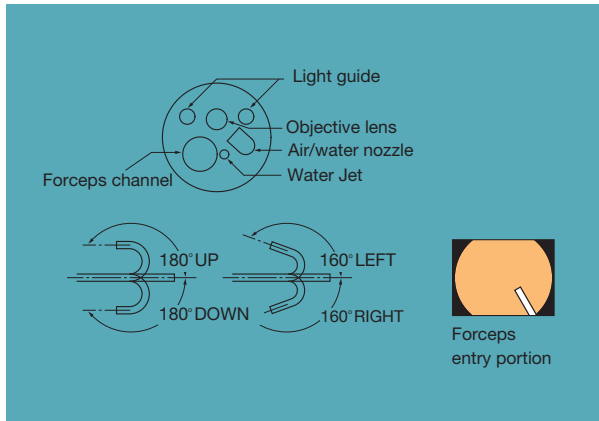
Field of view	140°
Observation range	2–100mm
Distal end diameter	9.2mm
Flexible portion diameter	9.3mm
Forceps channel diameter	2.8mm
Working length	1100mm
Bending capability	UP/DOWN 210°/90°
	RIGHT/LEFT 100°/100°
Total length	1400mm
Water Jet	Equipped
Compatible video processor	VP-4440HD



EC-600WL
VIDEO COLONOSCOPE



Field of view	140°
Observation range	2–100mm
Distal end diameter	12mm
Flexible portion diameter	12mm
Forceps channel diameter	3.8mm
Working length	1330/1520/1690mm
Bending capability	UP/DOWN 180°/180°
	RIGHT/LEFT 160°/160°
Total length	1630/1820/1990mm
Water Jet	9.266 pt
Compatible video processor	VP-4440HD



Design and specifications are subject to change without notice.